



# Transportation Services in Lexington

# Types of Transportation Services

## Fixed-Route/Fixed Destination

- MBTA
- Commuter Shuttles, incl REV
- Lexpress
- School buses
- Other private services

## Curb-to Curb/Door-to-Door

- Lex-Connect
- The RIDE
- FISH (volunteer program)
- Other (Uber/Lyft, etc.)

# MBTA



## MBTA buses in Lexington

- Route 62
  - Avg daily ridership ~ 1,363
- Route 76
  - Avg daily ridership ~ 968
- 62/76 on Saturday
  - Avg daily ridership ~ 444
- No Service on Sunday

## Other MBTA connections

- Alewife – Red Line
- Arlington Heights Busway (62, 62/76, 77, 78, 79)
- East Lex/Arlington/Mass DOT Park & Ride (77, 78, 84)
- Commuter Rail (Belmont, Waltham, Waverley, etc)
- Anderson Transportation Ctr (Woburn)

# Commuter Shuttles



## Commuting TO/FROM Lexington Employment

- Hartwell Area (REV bus)
  - Avg daily riders ~60
- Hayden Ave (AWF Route A)
  - Avg daily riders ~76

## For Lexington Residents Commuting TO/FROM Alewife

- REV Alewife Shuttle
  - Avg daily riders ~17



# School Transportation

- Mandated transportation
- Optional transportation
- Special needs transportation
- Sports and activities transportation

Flexpass Holders  
=462 for FY19

## Big Yellow School Bus Pass Holders

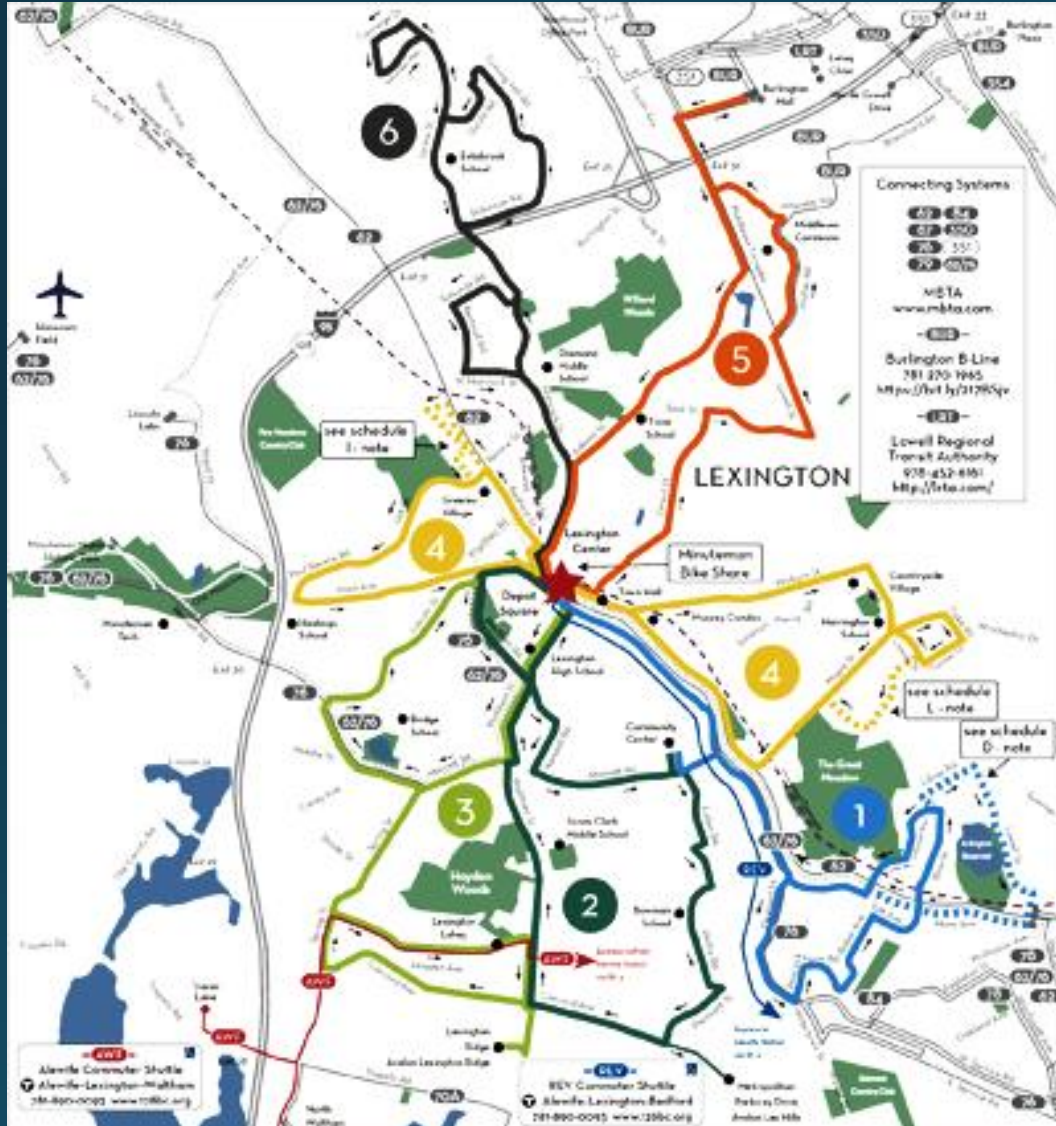
Fy12	FY13	FY14	FY15	FY16	FY17	FY18	FY19
31%	42%	43%	47%	50%	51%	53%	53% ~3,841



## FY21 – School Start Time & Redistricting Changes

- Traffic pattern change
- # of buses change

# Lexpress

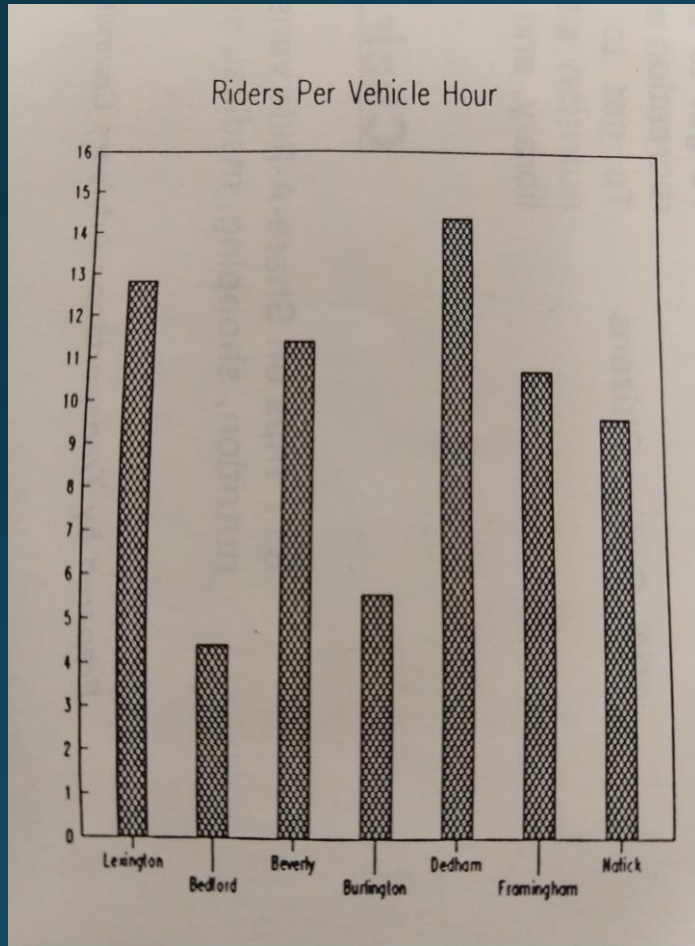


- 3 Buses; 6 Routes – Guess which is most popular?
- Mostly one-way loops
- Frequency of 60-70 minutes
- Humans of Lexpress
- Some changes since 1979

# Lexpress Over Time

- 1979 Founded (4 buses/8 routes Mon-Sat)
- 1980: 300,000 rides/yr (22 R/vh; projected 16 R/vh)
- 1992: Respectable Suburban Ridership
- 2003 Lexpress eliminated
- Ridership was regrowing thru FY14

1992 MBTA Suburban Bus Comparisons



Ridership ~125,000 (pop. 29,479)

FY11	Adult	Students	Seniors	<6	Total
Total	16,348	40,735	11,242	1,069	69,394

R/vh  
7.9

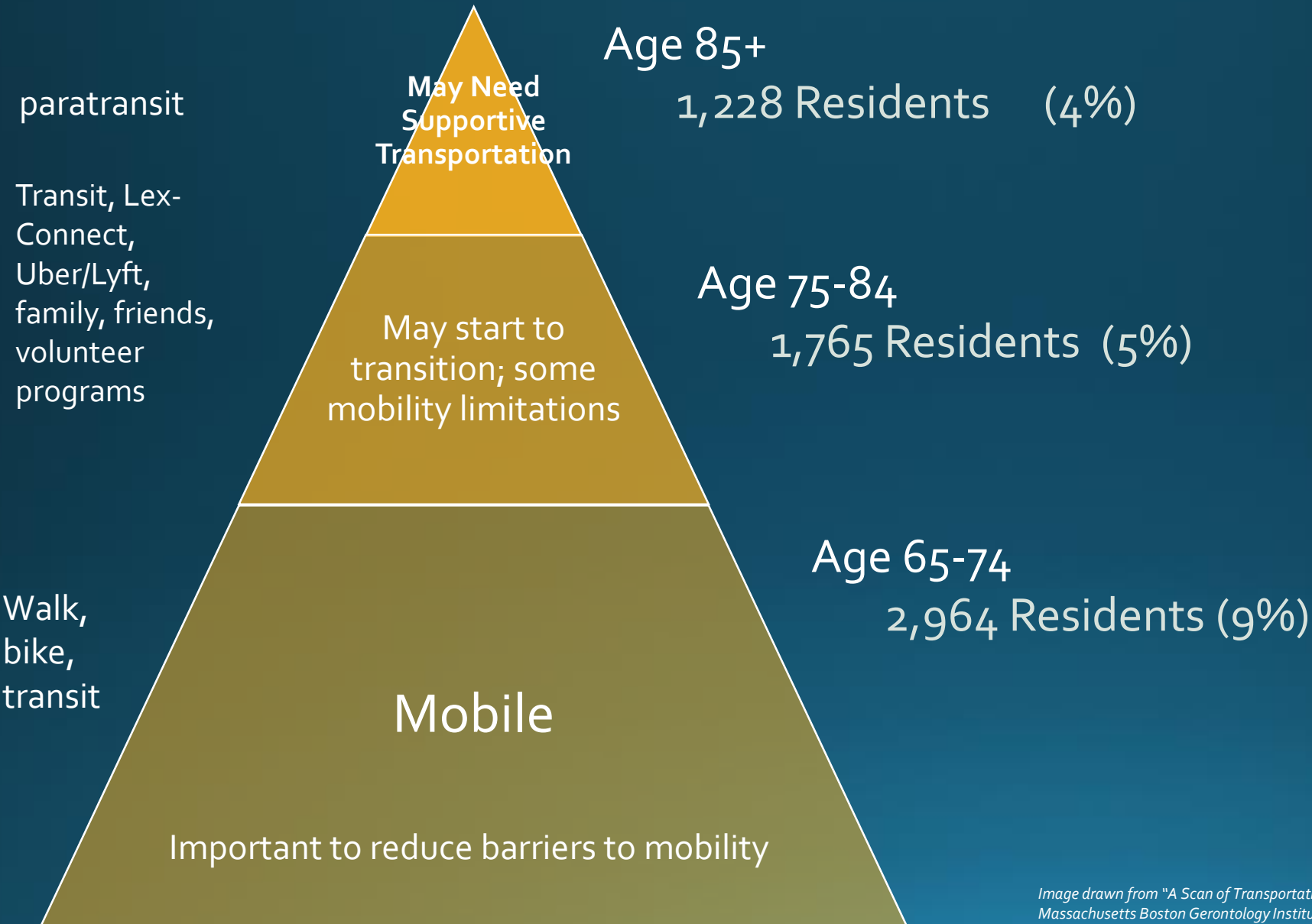
FY14	Adult	Students	Seniors	<6	Total
TOTAL	17,668	41,468	25,730	1,590	85,354

R/vh  
9.3

FY18	Adult	Students	Senior	<6	Total Ridership
<b>TOTAL</b>	<b>8,300</b>	<b>24,152</b>	<b>29,801</b>	<b>994</b>	<b>63,277</b>

R/vh  
7.6

On-Demand/Microtransit typically 1-3 R/vh  
Paratransit typically 1-2 R/vh



**Actual needs are not determined by age.**

Illustration is meant to show population groups and the type of transportation service they may need.

# Lex-Connect Taxi Voucher

- Pre-purchase discounted taxi vouchers \$5 each (Rider's trip cost is \$5-15)
- Mon – Fri: 9AM – 5PM; Sat/Sun: 8AM – 8PM
- Eligibility: Be a Lexington resident who is at least age 60 OR have a disability (taxis are not wheelchair accessible)



YEAR	Vouchers Redeemed	# of trips
FY13	1,338	896
FY14	4,008	2,685
FY15	3,752	2,514
FY16	4,002	2,681
FY17	4,444	2,977
FY18	4,048	2,706

## FY18 – Additional Info:

- 206 people took trips/ ~6-8 trips/day
- 71 used the service once; 135 were repeat customers
- About 30-50 regular users

# MBTA - The RIDE



- MBTA provided door-to door, shared-ride transportation
- Eligibility required
- Fare: \$3:15- \$5.25 per ride (\$3.35 & \$5.60 as of July 1)
- Reservation required
- Operates 5AM – 1AM, 365 days/year
- Uber/Lyft pilot

**Lexington Ridership on The RIDE**  
~ 15,000 rides/year

Jul '18	Aug '18	Sep '18	Oct '18	Nov '18	Dec '18	Jan '19
1,122	1,153	1,126	1,202	1,005	1,006	1,136

# FISH

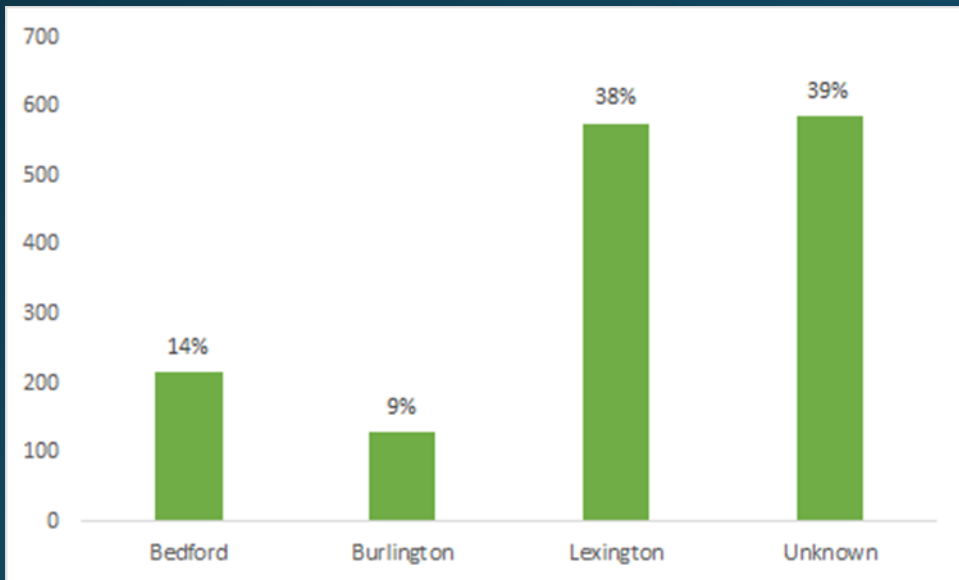


- Lexington residents driving Lexington residents
- Volunteer service offering 1 free round-trip ride per week to medical appointments
- Since 1972
- Volunteers use their own vehicles

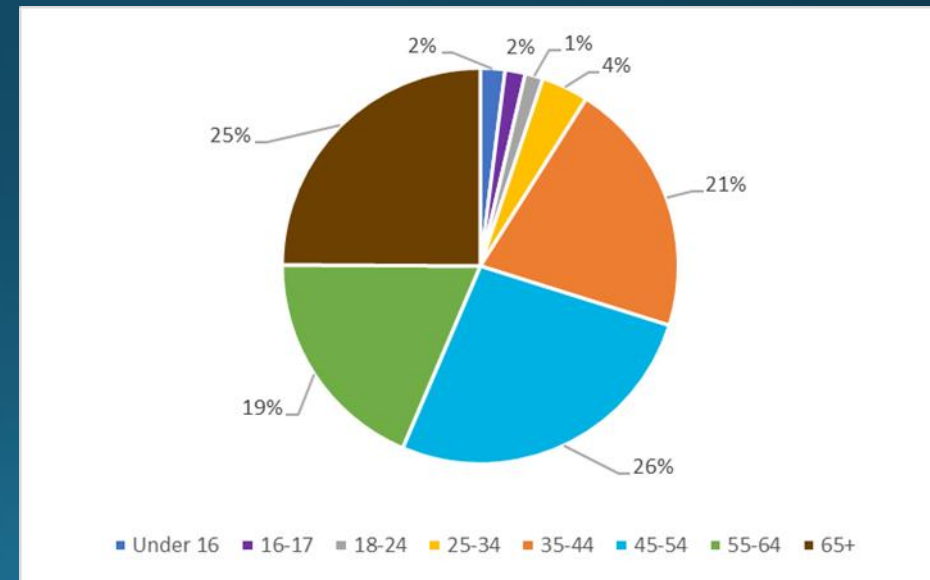
# Tri-Town Transit Study

- Lexington, Bedford, Burlington
- Survey conducted September & October 2018
- 1,504 respondents
- 575 identified as Lexington residents

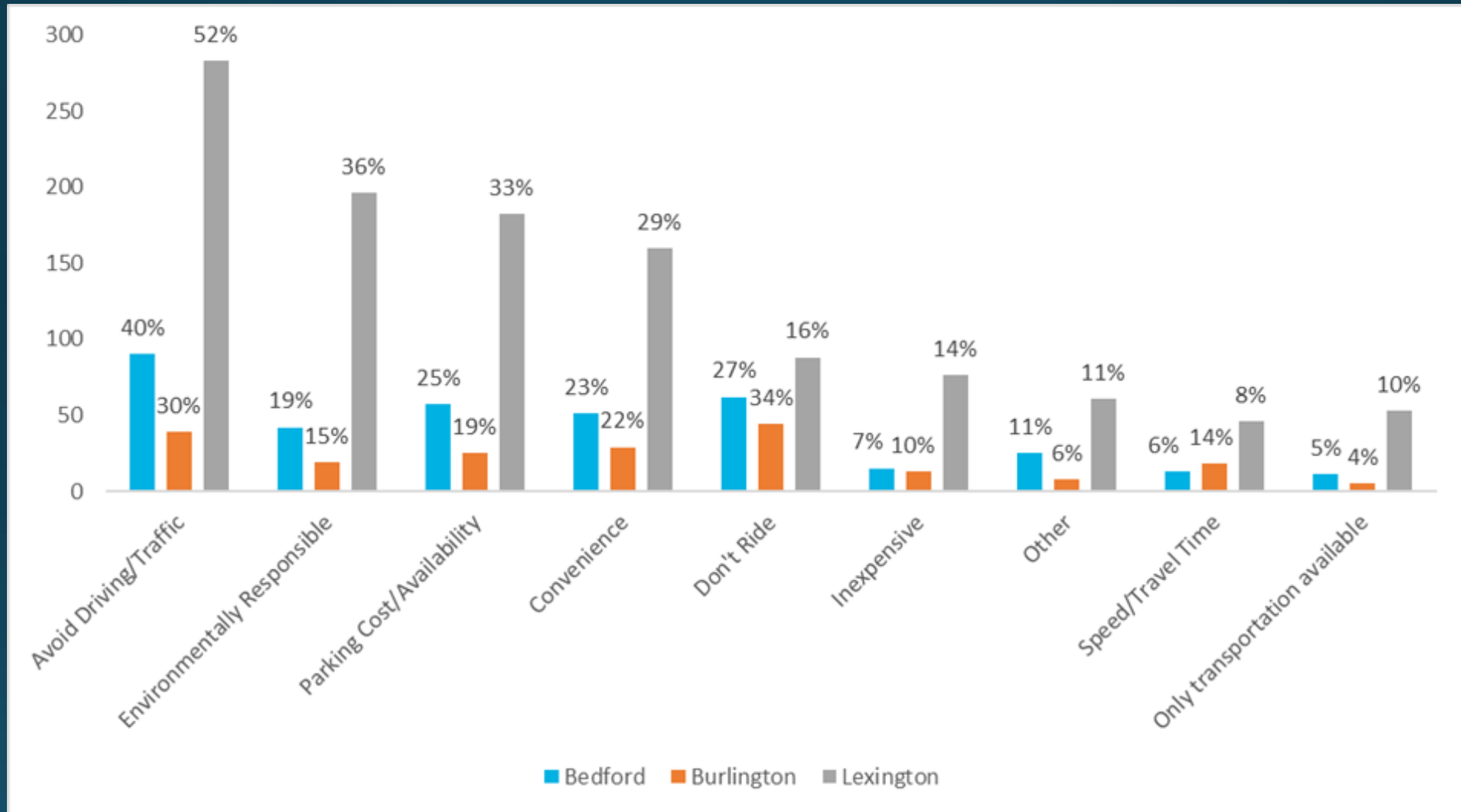
#Survey Respondents



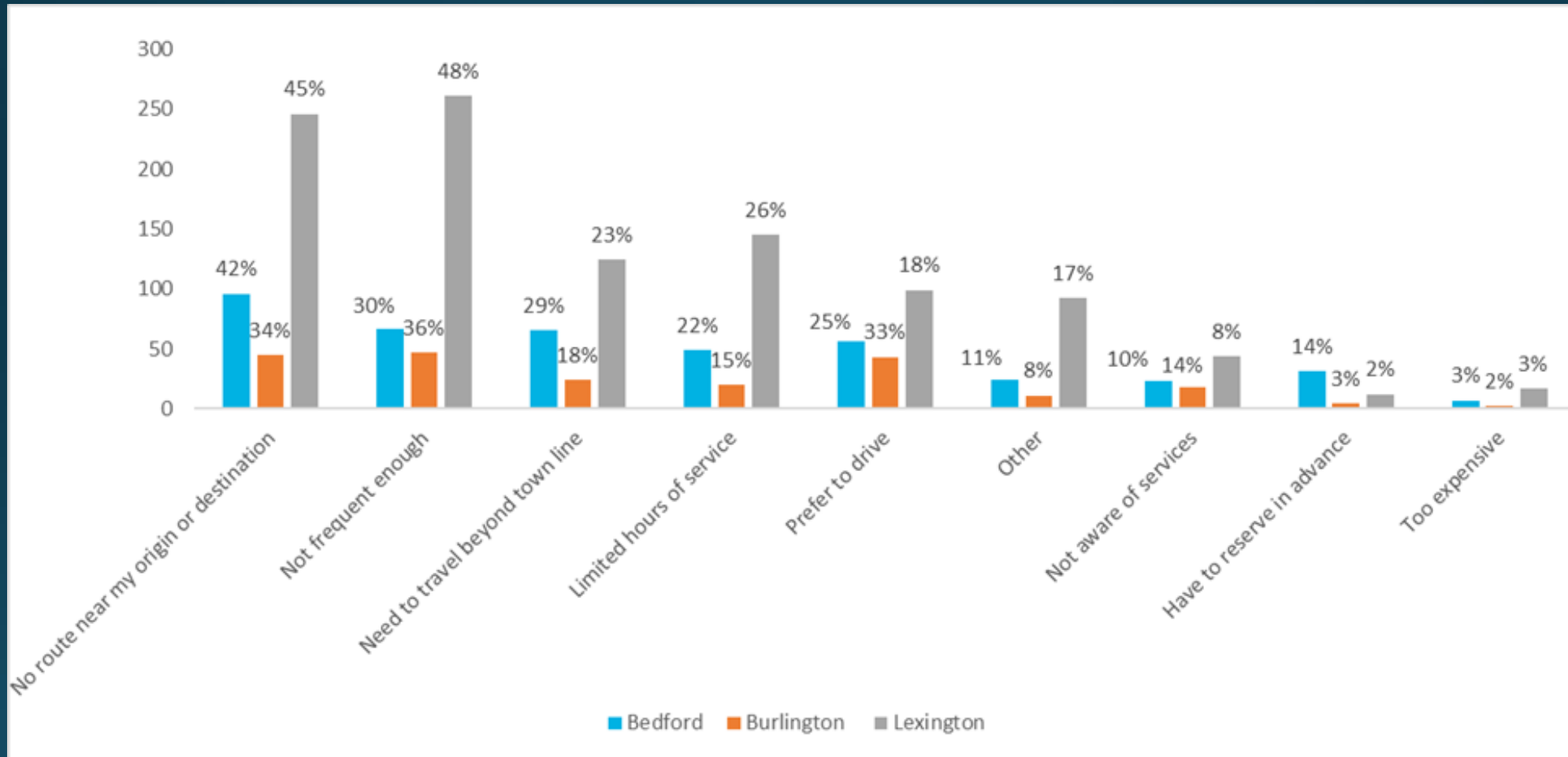
Age of Lexington Respondents



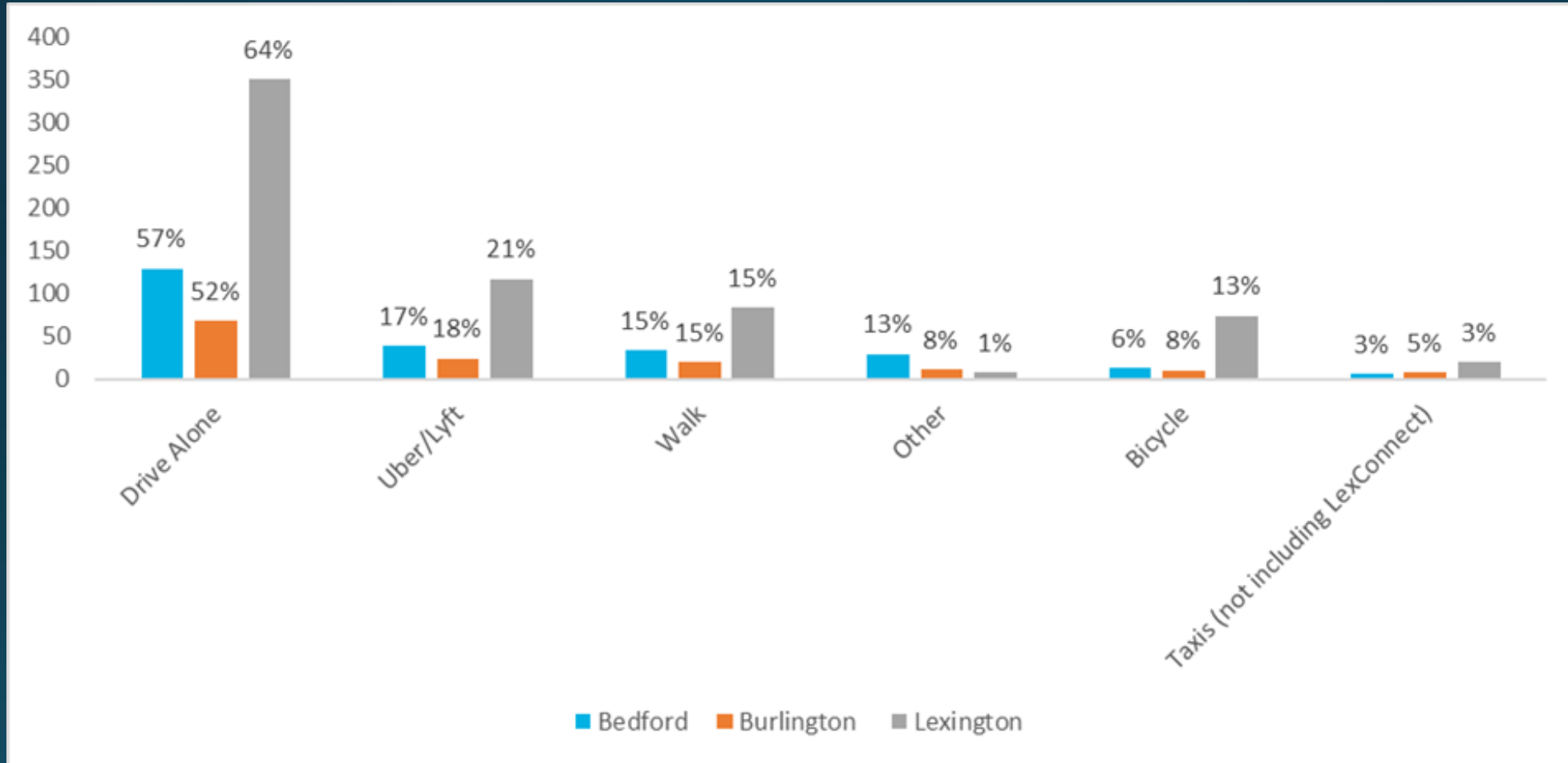
# Reasons for Taking Transit



# Reasons for NOT Taking Transit

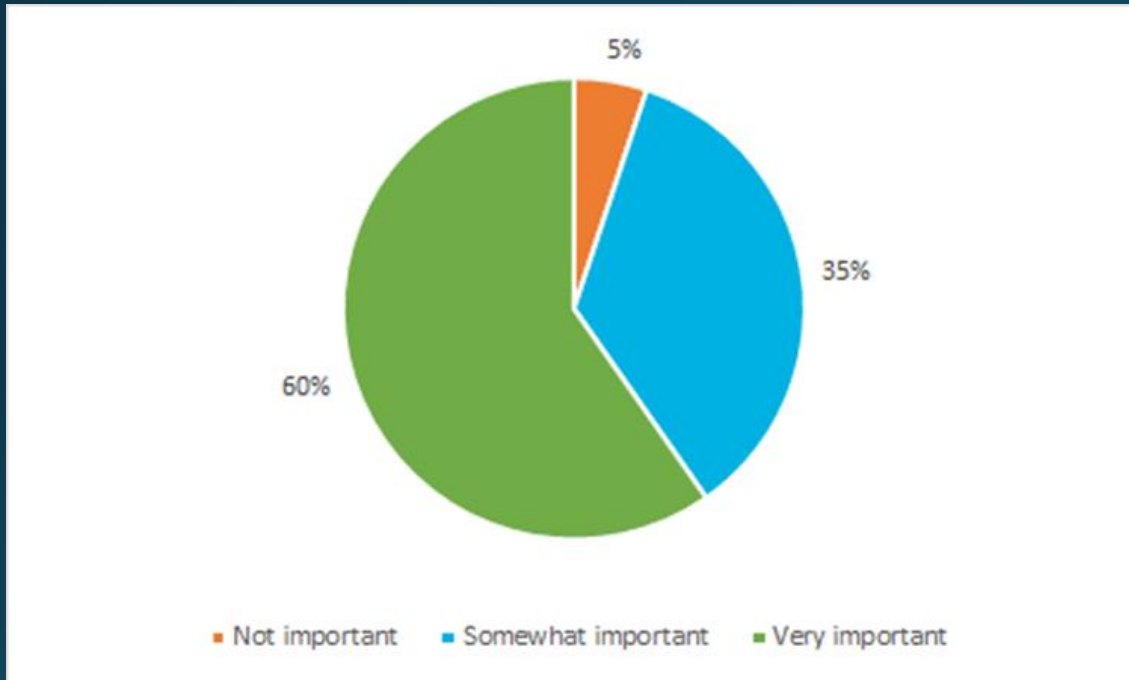


# Alternatives TO Transit

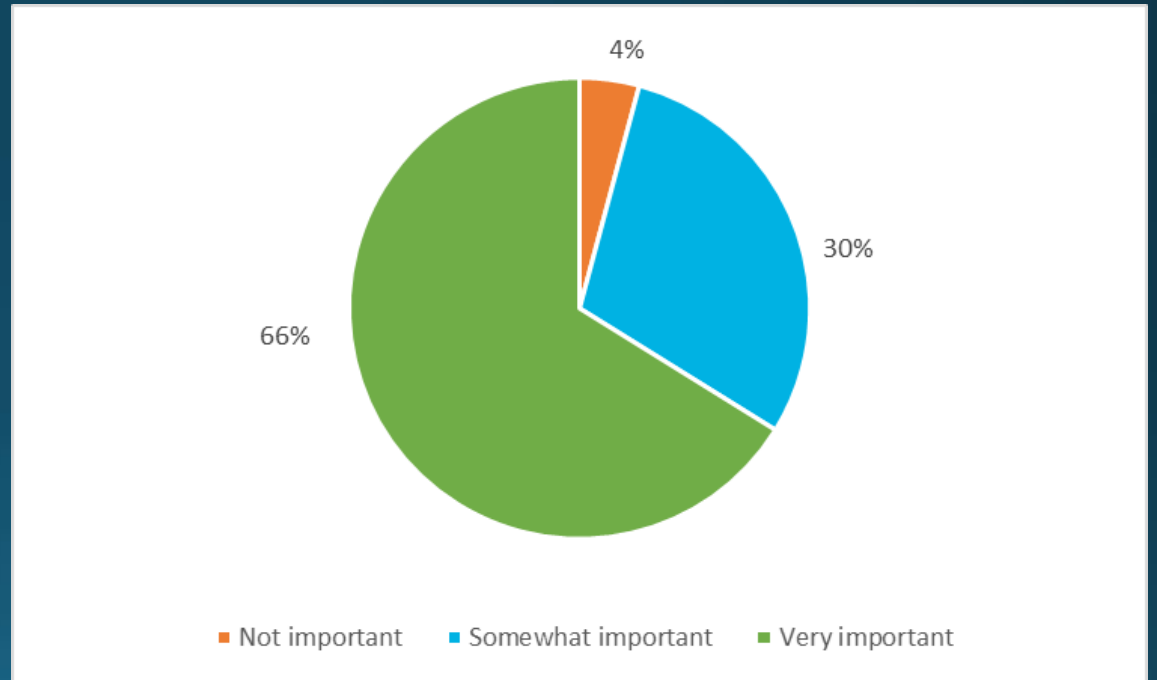


# Importance of Transit Services

Respondents of all 3 Towns



Lexington Respondents Only



# Transit Study Next Steps

- More comprehensive analysis
- Additional options to review by summer
- Aiming for some potential changes in FY21