

# Bicycling in Lexington

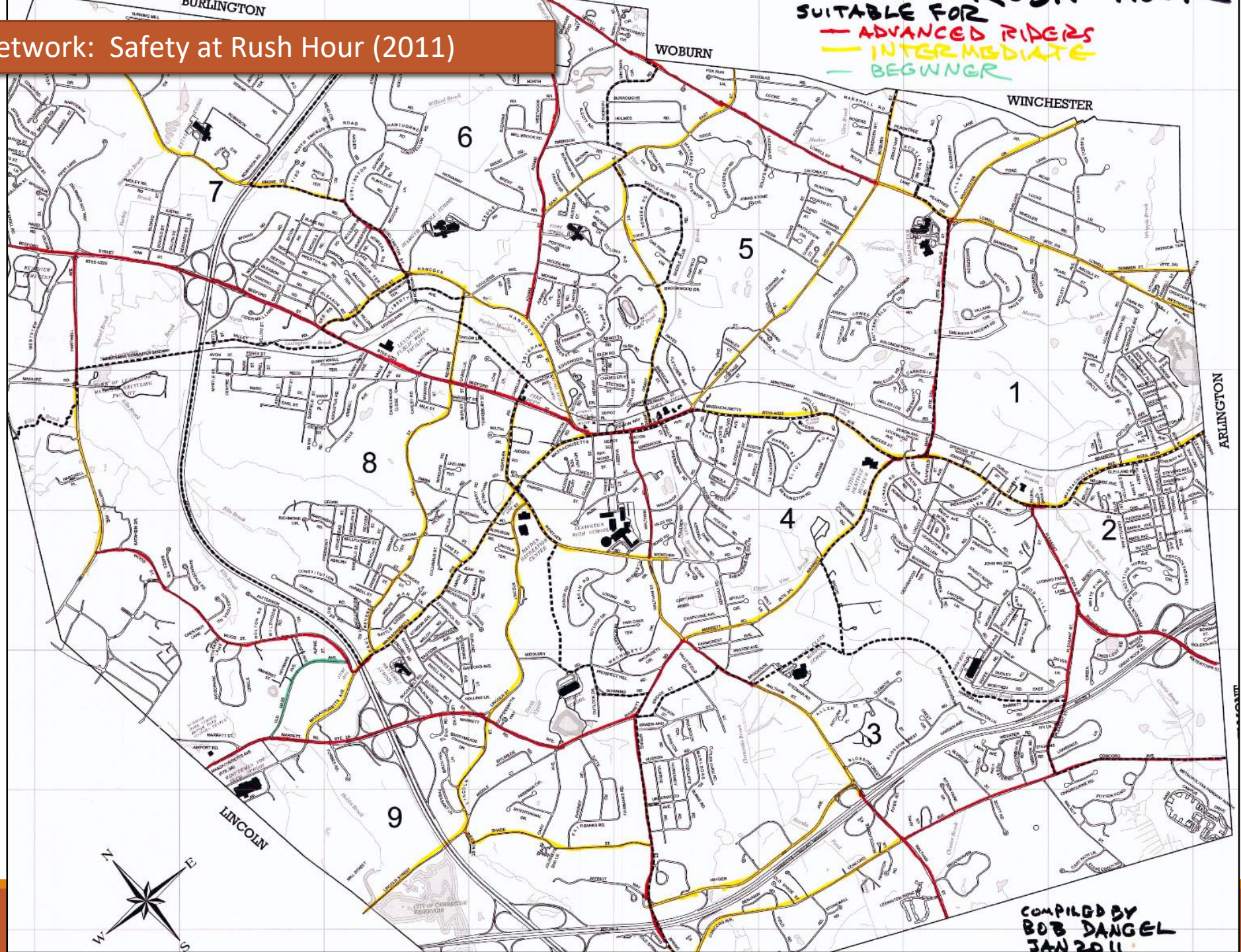


---

PEGGY ENDERS

CHAIR, LEXINGTON BICYCLE ADVISORY COMMITTEE

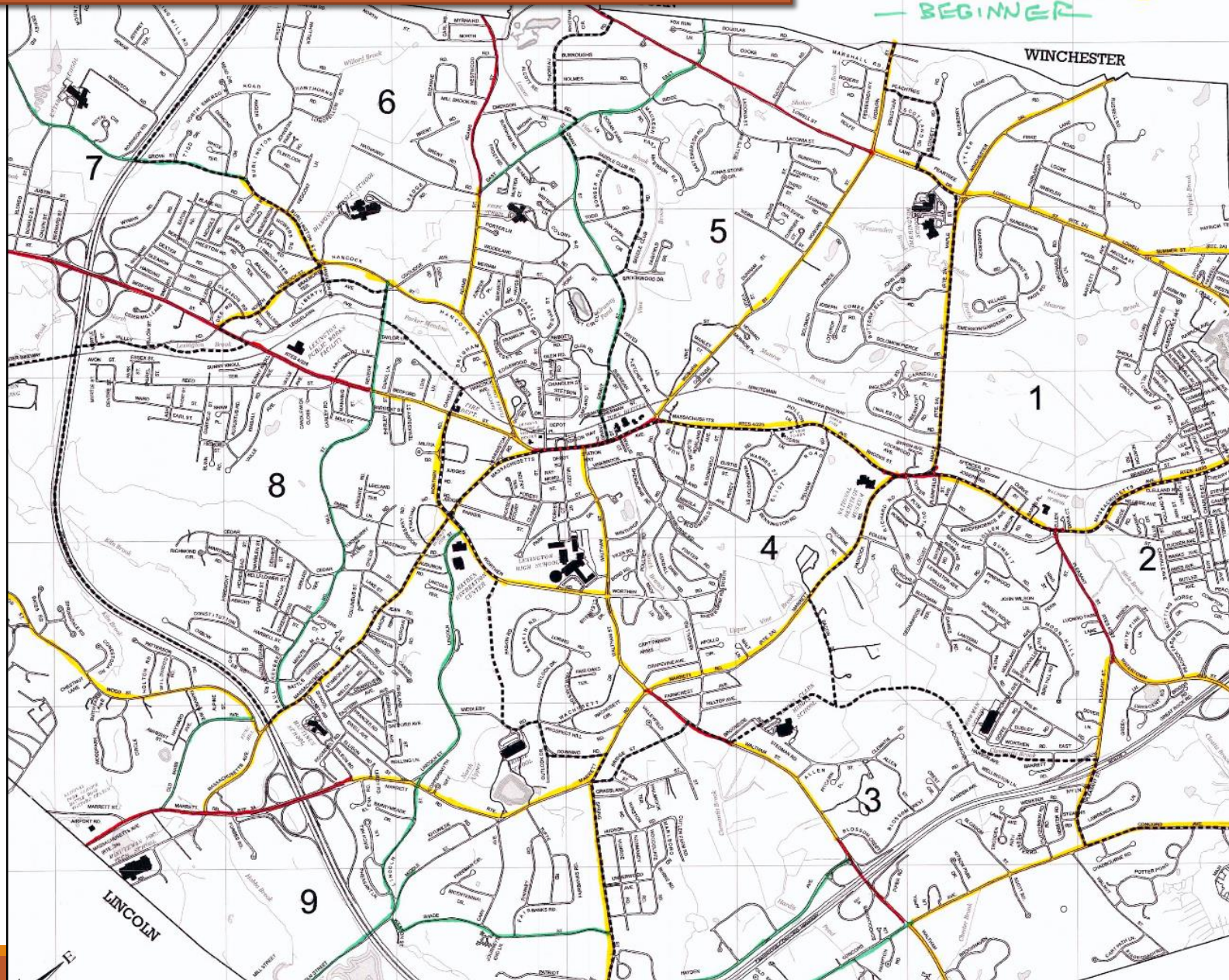
# Lexington Bicycle Network: Safety at Rush Hour (2011)



COMPILED BY  
BOB DANGEL  
JAN 2011

# Lexington Bicycle Network: Safety at Non- Rush Hour (2011)

SUITABLE FOR  
— ADVANCED RIDERS  
— INTERMEDIATE  
— BEGINNER



# Engineering: Bicycle Network and Connectivity

---

- Centerline mileage of Lexington's total road network: 212 miles
- $\leq 25$  mph : 166 miles.
  - Sharrows = 3.18 miles;
  - Raised cycle track = 0.4 miles
- $> 25$  mph and  $\leq 35$  mph: 32 miles.
  - Sharrows = 12.28 miles;
  - Bike lanes = 3.05 miles
- $> 35$  mph : 14 miles.
  - Bike lanes = 1.78 miles;
  - Raised cycle track = 0.44 miles



This is a Sharrow  
(Share the Road Arrow)



Protected Sidewalk and  
Bike Lane in Cambridge



Two-Way Protected Bike Lane in Cambridge

# Bicycle Network: Off-Street Facilities

Off street facilities legally used by bicyclists:

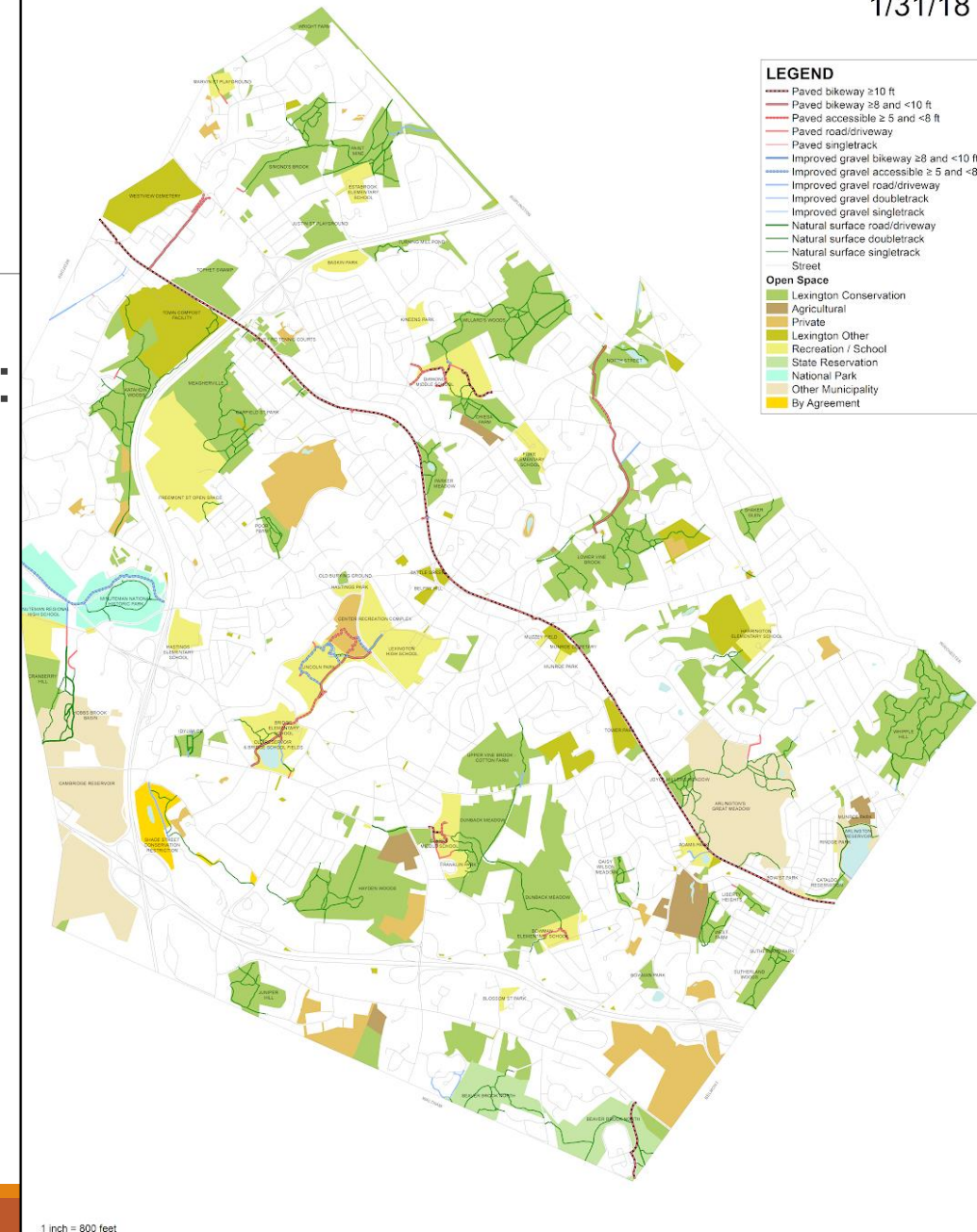
**Paved shared-use paths: 8.3 miles**

Minuteman Bikeway: 5.3 miles.

Other paved paths: 3 miles

**Unpaved shared use paths and single-track: 46 miles**

Source: Conservation Stewards



# Bicycle Parking

---

- MAPC discount bike rack program;
- Center Streetscape plan adds 23 racks;
- Grain Mill Alley Bike Node plan;
- Still needed: more seasonal bike parking.



# Education: Smart Cycling (and Driving)

---

- Public school program only at elementary school level;
- Twice-yearly Bike Smart/Smart Cycling on-bike program;
- Bicycling/Driving education and information flyers;
- Bikeway wayfinding and etiquette signage installed in 2018;
- Need:
  - Budget for bicyclist/motorist education;
  - Trailhead kiosks on the Bikeway.



Bike Smart Program 2017

Driving/Biking  
Courtesy Flyer  
Mailed with  
2017 Tax Bill

Be Courteous when *Driving!*

**Don't Turn in Front of People  
Riding Bikes**

Wait until they  
have cleared the  
intersection,  
then turn.



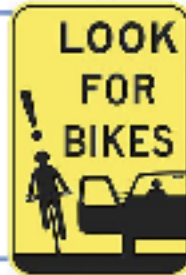
**Pass Bicyclists with At Least  
Three Feet of Space**



Sharrow (double  
arrow) symbols are  
a reminder that  
bicyclists can use  
the full lane on  
any road (except  
limited access  
highways).

**Look for People Riding Bikes  
Before Opening your Car Door**

Opening your door with  
your right hand will  
help you remember to  
turn and look first.



Lexington Bicycle Advisory Committee  
& Friends of Lexington Bikeways  
2017

Questions? Comments?  
Email [bicyclecmte@lexingtonma.gov](mailto:bicyclecmte@lexingtonma.gov)

Be Courteous when *Biking!*

**Stop for Red Lights Where  
Drivers Can See You**



Stop directly behind  
or in front of a car. If  
you stop to the right  
of a car, position  
yourself far enough  
forward that the  
driver can't turn  
without seeing you.

**Use a White Front Light and  
Red Rear Light at Night**

Light and Motion,  
NiteRider, Cygolite,  
and Planet Bike are  
a few good brands.



**Be Courteous when Passing  
Pedestrians and Slower Bicyclists**



Slow down when  
the path is crowded  
and audibly signal  
when passing. It's  
OK to ride faster  
when the path isn't  
crowded, but pass  
others with plenty  
of space.

Lexington Bicycle Advisory Committee  
& Friends of Lexington Bikeways  
2017



Questions? Comments?  
Email [bicyclecmte@lexingtonma.gov](mailto:bicyclecmte@lexingtonma.gov)

## Taking the Lane

Why is that bicyclist out in the lane?

To avoid car doors.



To prepare for a left turn.



To avoid potholes, debris, or other obstructions, or because the lane is too narrow to share safely.



## Massachusetts Law

Summarized from Massachusetts General Law, Chapters 85, 89, 90, available here:

<https://malegislature.gov/Laws/GeneralLaws>

- Cyclists must obey traffic laws in Massachusetts.
- Cyclists may pass on the left or right.
- Cyclists may ride on any road where not prohibited by posted signs.
- Cyclists must use a white headlight and red taillight or rear reflector from 1/2 hour after sunset until 1/2 hour before sunrise.
- Cyclists of age 16 or younger must wear a helmet unless carried in a trailer.



- Motorists must check for bicyclists before opening their car doors.
- Motorists must yield to oncoming bicyclists when making left turns.
- Motorists must not make an abrupt right turn immediately after passing a bicyclist.

**Town Bylaw:** Walk bicycles on Lexington center sidewalks (from Woburn St to the Minuteman statue).

# BIKE LEXINGTON!

What you should know about driving and cycling in Lexington.



Brochure design by: Lexington Bicycle Advisory Committee, Friends of Lexington Bikeways, and Jennifer Melot

Printed thanks to: Friends of Lexington Bikeways



## Road Markings

**Sharrows** (share-the-road arrows) help cyclists position themselves in the lane.



**Bike Lanes** are marked by a bicycle symbol between painted lines. Only cyclists may use bike lanes, but they are not required to use them.



**Bike boxes** help cyclists position themselves safely when stopped at signalized intersections.



**Signal Markings** at intersections show cyclists where to stop to activate the traffic signal.



For more information, see: [massbike.org](http://massbike.org)

## Safety Tips

At red lights, stop where motorists can see you and beware of drivers who neglect to signal. Be very careful around wide trucks and busses.



Opening doors can send you flying; keep away from the sides of stopped cars.



For more tips, visit: <http://bicyclesafe.com>

## Lights and Visibility

Lights can improve your visibility during the day. After dark, a white front light, rear reflector or taillight, and reflectors on ankles or pedals are required by law. Lights with greater than 150 lumens will help you see.



## Bikeway Courtesy



**Keep to the right!**

When passing, give an audible warning and do not squeeze through narrow gaps at high speed.

**Be responsible with dogs!**

Dogs must be kept on a short leash to avoid creating a hazard for cyclists. Pick up dog waste.

**Be responsible with children!**

Teach your children to stay to the right, and do not let them wander all over the path.

**Use caution at intersections!**

Do not assume drivers can see you. Come to a complete stop.

**Be visible!**

Cyclists must use front and rear lights at night. It is courteous to cover or point bright lights downward when approaching others. Pedestrians should have a reflective sash or rear blinker.

## Lexington Bike Resources

**Bike Lexington Newsgroup:** To sign up, go to <http://groups.yahoo.com> and search for Bike Lexington.

**Bicycle Advisory Committee info:** See <http://lexingtonma.gov/committees/bicyleadvisory.cfm>

**Friends of Lexington Bikeways:** See [www.folb.net](http://www.folb.net) and Like us on Facebook!

Bike Lexington Flyer Mailed with 2015 Tax Bill and currently available in many Town public areas

# Encouragement:

## Mainstreaming bicycling culture

---

- Lexpress and MBTA buses equipped with bike racks;
- First Mile/Last Mile bike racks at bus stops along east Mass Ave corridor;
- Center streetscape bikerack expansion;
- Parklet on south side of Mass Ave;
- More kids riding to school!
- Bike Walk 'n Bus Week
- Minuteman Bike Share (Zagster bikes)



# Enforcement: Promoting safety and protecting bicyclists' rights

---

- Police Department liaison with Bicycle Committee;
- Police Bike Patrol has expanded its numbers;
- State Laws are being improved to protect cyclists' rights;
- New Police ProPhoenix software will improve bike incident data collection and analysis.



# Evaluation and Planning

---

- 2009 Traffic Calming Policy;
- 2015 Town Meeting Article on Town-Wide Bicycle and Pedestrian Safety;
- 2015 Lexington Open Space and Recreation Plan Vision for Lexington;
- 2016 Complete Street principles adopted;
- 2018 “Lexington Report Card” from the League of American Bicyclists;
- The 2019 Statewide Bicycle Transportation Plan (MassDOT):

# Challenges & Opportunities

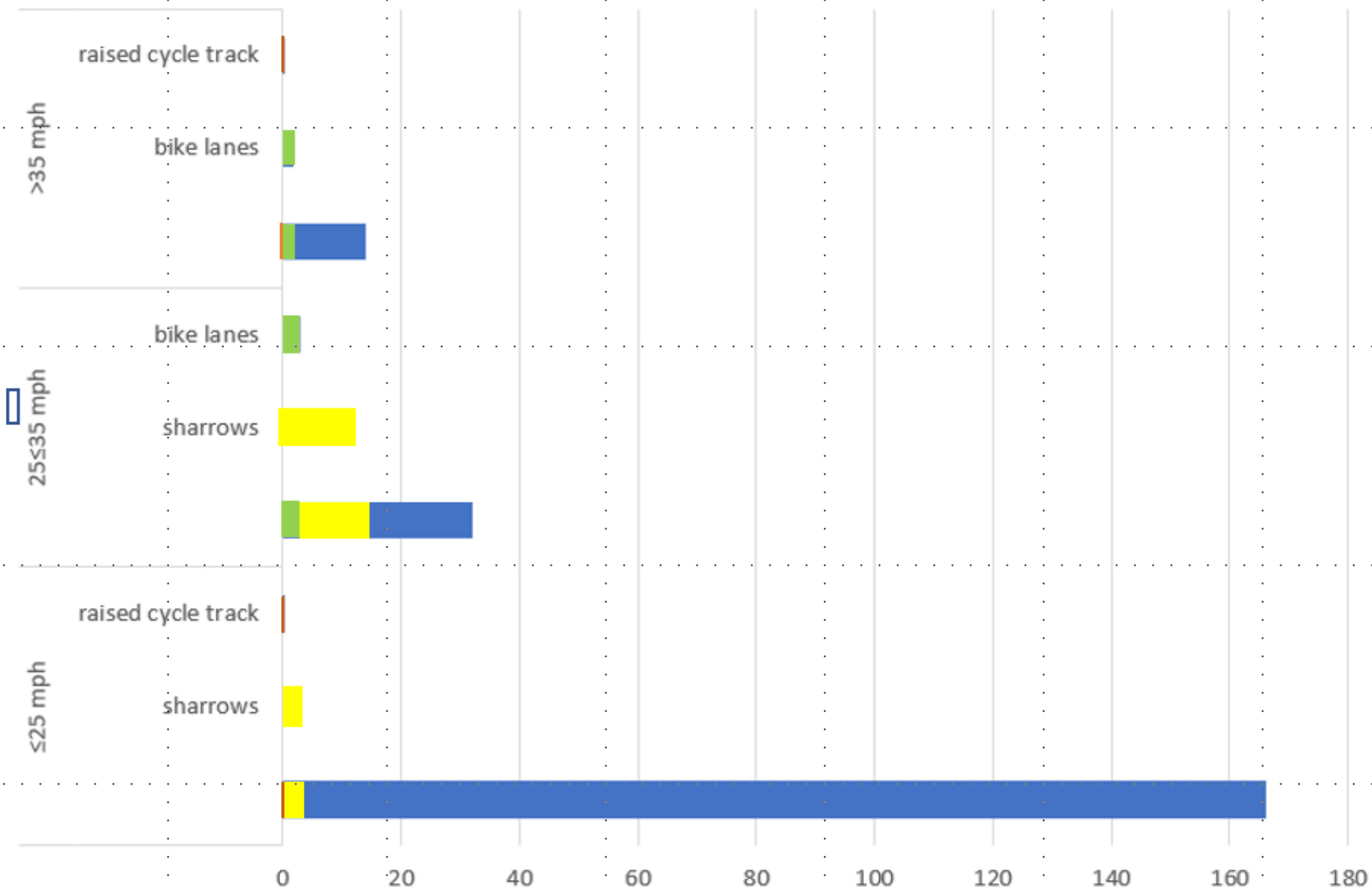
---

- Priority of “throughput” of cars vs design of true Complete Streets;
- Bikeway overcrowding and courtesy;
- Need regular counts of bikes on town roadways;
- New bicycle technologies: electric-assist, fat tire, cargo, tricycles, etc.
- Less-stress bicycle route networks;
- Connections between regional bike and walking paths;
- Bikes Mean Business!



**THANK YOU!**

# Lexington Road Network- 212 miles total



# Selectmen's Goals 2019-2020

---

#19

## **Achieve League of American Bicyclists Silver Bicycle Friendly Community status.**

Develop a Bicycle Transportation Plan as part of the 2019 Comprehensive Plan. Set the vision for a more bikeable Lexington as well as provide the framework for developing a network of true Complete Streets. The guiding principle: enabling people of all ages and abilities to bike safely and comfortably throughout Lexington. Develop safe and effective roadway accommodations for bicyclists that go further than sharrows or simple bike lanes.

Action:

1. Include in the town budget funding for bicycle (and pedestrian) safety training/education.
2. An increased emphasis on bicycle safety education and on renewing our bicycle friendly status (and perhaps improving from bronze level to silver) has been requested by the Bicycle Committee to be considered as part of complete streets.

# 17 Comprehensive Plan

Consider a Bicycle Plan for the Town of Lexington as part of the forthcoming comprehensive transportation planning process.

# Bicycle Advisory Committee Goals to the Board of Selectmen 2018

---

Develop a Bicycle Transportation Plan as part of the 2019 Comprehensive Plan. The plan should set the vision for a more bikeable Lexington as well as provide the framework for developing a network of *true* Complete Streets. Such a plan should have as its guiding principle the goal of enabling people of all ages and abilities to bike safely and comfortably throughout Lexington.

Develop safe and effective roadway accommodations for bicyclists that go further than sharrows or simple bike lanes. Protected or separated bicycle accommodations should be a goal for roads heavily travelled by bike riders.

Include in the town budget a regular allowance for bicycle (and pedestrian) promotion and safety – including a robust education and information program for all ages, hands-on skill-building events for children, regular reporting of bicycle incidents, zoning requirements to encourage bicycling, etc. A staff member should be identified to manage this effort.

A policy issue that will require Board attention in the near future: the increasing presence of electric and electric-assist bicycles on the Minuteman Bikeway and other town pathways.

# The Bicycle Committees

---

- **Lexington Bicycle Advisory Committee:**

- Advises Select Board on matters related to bicycling in Lexington;
- Works with town departments, acts as advocate for improvements to cycling infrastructure, roadway conditions, and bicycle safety education;
- Works with Police Department on improving data collection and reporting of all types of bike incidents.

- **The Friends of Lexington Bikeways (501c(3)):**

- Raises funds and hires contractor to plow Lexington section of Minuteman Bikeway;
- Partners with Greenways Corridor Committee and Town staff to produce yearly Bike Walk 'n Bus Week: an annual event since 2013 “to promote healthy and sustainable transportation options.”
- Bike Corrals at Farmers’ Market
- Children’s Bike Helmet give-away and parent education each year at Discovery Day;
- Bike light giveaway on bikeway in late fall;
- Bikeway cleanups and twice-yearly counts.
- Celebrated the 25th Anniversary of the Minuteman Bikeway with partner towns of Arlington and Bedford.

